



EL TORO---GREAT FOR GRAIN GROWING



HERE the thousand hills roll up toward a distant vista of rugged, brush-covered peaks on the east, where other hills roll outward toward the edge of the sea, where picturesque homes are built upon knolls overlooking orchards thriving without a drop of artificial irrigation, where iron horses take away to market more grain than from any other point in Southern California—there is where you find El Toro.

El Toro lies on the Santa Fe railroad, thirteen miles from Santa Ana by rail, in the midst of a section whose principal products are grain, hay and cattle, and the output of 125 or 150 acres of apricots. El Toro is a most excellent example of what dry farming will do. The place has no irrigation system. The orchards and fields grow their crops with no water except rain. Good soil and careful attention on the part of the rancher produce the results. On one ranch a pumping plant has been placed in operation and a stream of water produced. This ranch is the exception.

Those who first built homes at El Toro had an eye for the picturesque. The outlook toward the Santa Ana range of mountains is magnificent. To that the ranchers added a foreground and setting of fruitful orchards. Perhaps a dozen of the homes are erected upon knolls in the midst of orchards. To the west of the railroad nearly all of the orchards are apricot. The trees are good producers and the fruit is of an exceptionally fine flavor. Apricot drying season is a busy season in the orchards, and to get the crop properly cut and dried everybody—men, women and children—turns out and lends a hand. One of the biggest eucalyptus groves in this section of the state is planted on the Dwight Whiting ranch. Dwight Whiting bought a big holding from the Serranos, a Spanish family that held property from the early days. This purchase was made in the eighties. A number of English families settled at El Toro in the early nineties, the homes built by them being almost entirely in the apricot section.



NIGUEL RANCHO (L. F. MOULTON CO.) HEADQUARTERS

Juan Gless, for years in the sheep business, has bought one of the apricot orchards, in the midst of which is his home.

No finer grapes are grown than those produced at El Toro, like the apricots, without irrigation. Among the vineyards that produce excellent crops, marketed in Santa Ana and Los Angeles, are those owned by Mrs.

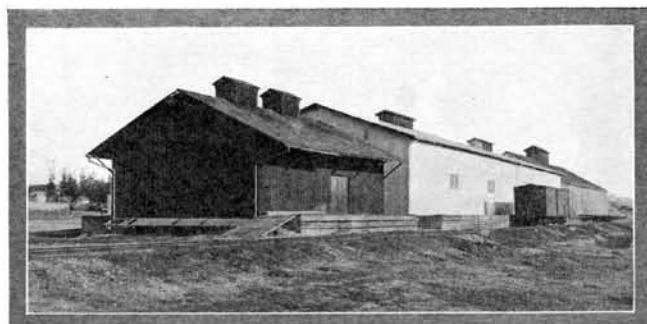
cinity find their way to the Moulton warehouses at El Toro. In the weeks when grain is being delivered at the Moulton warehouses, a striking picture is presented almost any morning. Four-, six-, eight-, ten- and even twelve-horse or mule teams drawing wagons loaded down with barley, threshed, sacked and ready for the warehouse, draw up in the big open

east come apiarists with their honey and beeswax for shipment.

No more beautiful trips can be found than those available from El Toro. A winding road leads up the Aliso canyon. In Spanish Aliso means sycamore, and well named was that canyon. Along the bed of the wash are splendid specimens of that tree. Far back into the mountains the roads lead. Not far away is the road over the ridge into the Santiago canyon, at the ranch made famous as the home of Madame Modjeska. Up the Trabuco is an excellent road, picturesque all the way, taking one into a canyon whose sides are covered with scrub-oak, sumach and other growth.

The district has a good school located upon a rise overlooking the village and the surrounding country. About it are growing a number of big pine trees. St. George's Episcopal Church is unique in that it owns 35 acres. About this church, which is supplied by the rector of the Episcopal church at Anaheim, is gathered much of the religious spirit and life of the community. What the church is in a religious way, the hall erected by public subscription is in a social way. At this hall dances, socials and entertainments are held.

Taken all in all, no more attractive place for real country life can be found than El Toro, with its rich soil, its beautiful scenery, its atmosphere of purity, peace and plenty.



L. F. MOULTON CO. WAREHOUSE, EL TORO

Munger and G. W. Stevens.

But of all the products that have won distinction in this vicinity, the barley is topmost. On the Moulton ranch some 7500 acres are farmed by tenants, who number about fifteen. The crops raised on a large area of the Trabuco Mesa and on other portions of the O'Neill ranch in this vi-

space between the warehouse and the depot on the west and A. A. Avery's store, a hotel, blacksmith shop and other buildings on the east. The grain has been hauled in from every direction of the compass. A visitor will find here some magnificent farm stock, well kept, powerful horses and mules. From the mountains to the



APRICOT ORCHARD, CAPT. G. R. HUDDY, EL TORO



RESIDENCE OF JUAN GLESS, EL TORO